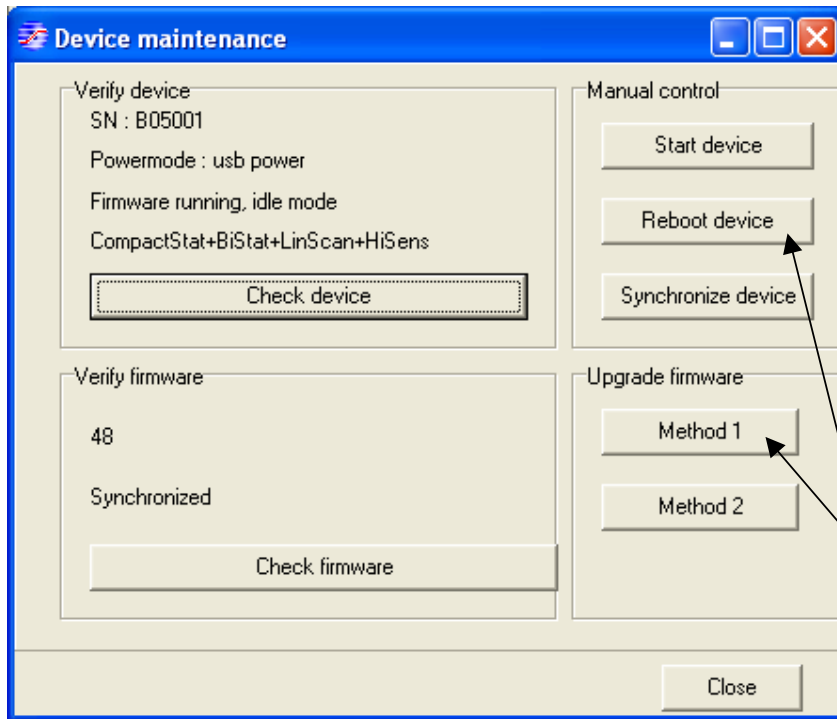


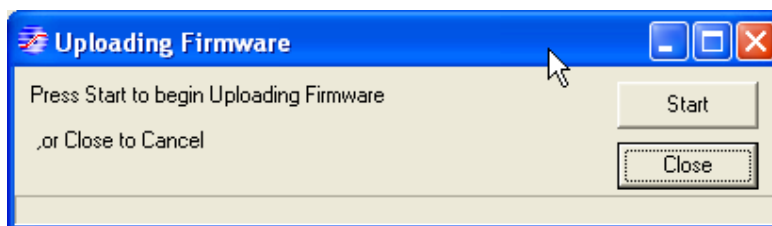
Upgrading firmware IviumStat and CompactStat:

After upgrading the pc-based software to a newer release, it may be necessary to upgrade the internal software of the instrument: the so-called firmware. No tools or files are necessary. The required firmware is packed inside the pc-software, and the upgrade can be performed with the standard usb cable.

After the instrument is connected, in the main menu, press Tools and Device Maintenance:



The right-bottom panel gives access the firmware upgrade functions. Press Method 1. This will give a pop-up window prompting to start the Firmware upload:



After pressing Start, the firmware is transferred to the instrument. When no error messages occur, press close. Then in the Device Maintenance panel, press Reboot Device, see above. Now close and re-start the pc software. The new firmware will be activated after re-connecting.

If during this process, an error message is shown, try to upload again. If Method 1 remains ineffective, try to apply Method 2. Here use the right-top-button indicated with Start.

If the instrument becomes unresponsive after a failed upgrade, see the trouble shooting paragraph.

Troubleshooting: Recovering from an unresponsive instrument.

If the connection process takes exceptionally long, or the instrument fails to respond at all, possibly its internal firmware is corrupt. Please note that the recovery procedure is slightly different for IviumStat and CompactStat.

For CompactStat:

- remove power cable and USB cable
- start the pc software and re-connect the usb cable (do not press connect !)

For IviumStat:

- switch instrument off with power button on the front of the instrument
- press the CEL OFF button, before switch the instrument on
- start the pc software (do not press connect !)

From the main menu, press Tools and Restore Device:



3 options are shown:

- Restore factory settings: reverts back to the original settings and calibration values.
- Restore factory firmware : sets the firmware back to the original release
- Restore previous firmware : go back to the version before the last upgrade

The last option is useful when recovering from a failed upgrade. If also the previous version was corrupt, the factory version can be used.

When a firmware version is running again, the upgrade may be redone.

Please note that these recovery functions can only be used directly after power-on, before the Connect button was pressed. For the CompactStat, it means that the usb cable and power cable must have been removed.